

RESCUE NET project

ERASMUS+ - Small-scale partnerships in adult education (KA210-ADU)

CIVIC PROTECTION PROTOCOLS – KAPAKLY MUNICIPALITY

Flood and Inundation Training Protocol for Persons with Disabilities

A flood is the temporary covering of soil, normally dry land, or residential areas by water due to the overflow of water sources (river, stream, sea). It is usually caused by sudden and heavy rainfall, snowmelt, or insufficient drainage systems, and can be a destructive natural disaster.

Flood emergencies may develop more slowly than fires, but depending on environmental conditions, they can quickly become dangerous. For persons with disabilities, especially those with limited access to auditory warnings such as deaf individuals, this situation increases vulnerability due to restricted mobility and difficulty in reaching safe areas. Measures against floods can be categorized into three stages: **Preparedness, Actions During Flood, and Actions After Flood.**



1. Preparedness Stage

- Be aware of the flood risk in your area.
- Do not build houses in flood-prone areas such as riverbeds.
- Follow flood warnings via TV, radio, and other communication tools.
- Secure items on balconies and rooftops; reinforce doors, windows, and chimneys.
- Prepare sandbags if necessary.
- Make a list of people to contact in advance.
- Learn emergency phone numbers (in Türkiye: 112).
- Prepare an evacuation plan considering the possibility of not being able to stay at home. Define how evacuation will be carried out, who will assist you, and identify alternative shelters.

- Prepare an emergency kit.
- Keep communication devices fully charged.
- Have backup power units for vital medical devices.
- Learn how to shut off gas, water, and electricity systems in your home.
- Store extra food and water in case you cannot leave home.
- If you are hearing impaired, keep battery-powered colored warning lights at home.
- If you are speech impaired, prepare information cards for officials.
- Keep your vehicle's fuel tank at least half full.
- Coordinate with workplace or school administration to ensure assistance outside the home.
- Conduct emergency and evacuation drills at least twice a year.

Pre-Flood Precautions (Flood Preparedness Plan)

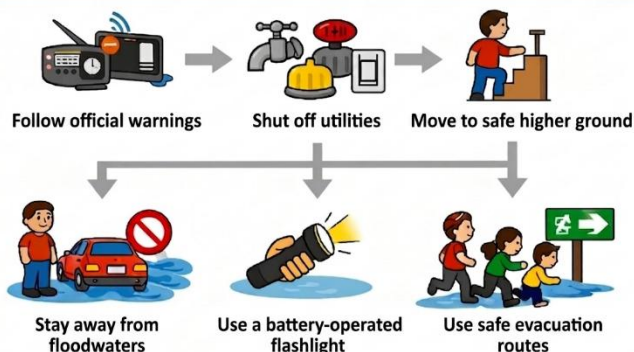


2. Actions During Flood

To survive and ensure safety during a flood, quickly recognize early warning signs such as rising water levels, avoid entering floodwaters, and maintain continuous visual contact with deaf individuals while evacuating to higher ground via predetermined safe routes.

- Review your preparations.
- Follow radio and television broadcasts; do not leave home unless there is an official warning.
- Fill bathtubs and containers with clean water.
- Stay away from fragile areas such as windows.
- Shut off utilities.
- Take your emergency kit with you.
- Move to higher ground if possible.
- Remember that flash floods may occur suddenly.
- Stay calm and composed.
- Do not walk through water deeper than 15 cm during evacuation.
- Do not drive into moving water.
- Stay away from electrical sources.
- Avoid riverbeds, streams, ditches, valleys, and canyons.
- Do not allow children to play in floodwaters.
- Do not eat food contaminated by floodwaters or drink tap water.

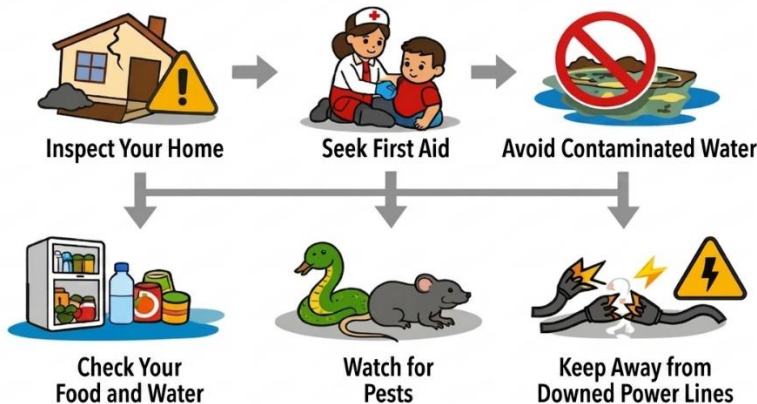
WHAT TO DO DURING A FLOOD



3. Actions After Flood

- If injured during the flood, seek medical assistance.
- If injured, get a tetanus shot.
- Do not return home until authorities give permission.
- Do not enter your home if there is still standing water around it.
- Assist elderly, infants, or persons with disabilities.
- Do not enter homes until damage assessment has been completed.
- Use battery-powered flashlights for lighting during inspections.
- Do not use wells for drinking water; use sealed bottled water if possible.
- Watch out for snakes, rats, and other pests.
- Stay away from downed power lines.

Instructions After a Flood



Conclusion

Measures taken during floods and inundations strengthen not only physical safety but also social solidarity. An inclusive approach that prioritizes the needs of persons with disabilities is one of the most critical elements of disaster management. Accessible communication, visual warning systems, and personal support mechanisms during preparedness, response, and recovery stages play a major role in preventing loss of life. This protocol aims to ensure equal protection for all individuals and to build a conscious, coordinated society against disasters.